



Visit our website at bmwusa.com/certified or call us at 1-800-334-4BMW (4269).

The Certified Pre-Owned **BMW** Vehicle Program.

All Certified Pre-Owned BMWs...

- Meet specific selection criteria.
- Are certified by factory-trained BMW Technicians in accordance with a comprehensive Inspection Checklist.
- Are backed by a comprehensive 2-year/50,000-mile Protection Plan, which includes a limited warranty and BMW Roadside Assistance.*

- Have attractive lease and retail financing options available through BMW Financial Services.**
- Are supported by BMW of North America, LLC, and a nationwide network of BMW centers.

* The Certified Pre-Owned BMW Protection Plan provides coverage for up to 2 years or 50,000 miles (whichever comes first) from the date of expiration of the 4-year/50,000-mile (whichever comes first) BMW New Vehicle Limited Warranty.

** Financing programs vary depending upon model. All financing is subject to credit approval.

© 2004 BMW of North America, LLC. Not to be reproduced wholly or in part without written permission of BMW of North America, LLC. The BMW name and logo are registered trademarks.

04CPOFLBRO

**Certified Pre-Owned
BMW Vehicle Program**

bmwusa.com/certified



**The Ultimate
Driving Machine®**

Certified Pre-Owned **BMW** Vehicle Program



≡ Certified Pre-Owned ≡
by BMW

Certified Pre-Owned
BMW Vehicle Program

bmwusa.com/certified



The Ultimate
Driving Machine®



Going places





Have some
fun
along the way.

The journey should be as much fun as the destination. At BMW, that's the way we look at life, and that's the philosophy behind our cars and Sports Activity Vehicles (SAVs). We believe that the drive to work, the drive to the convenience store and even the drive to the dentist should be among your favorite moments of the day. (Sorry, we can't change the experience once you get there.)

You'll understand what we mean once you've spent a few minutes behind the wheel of a BMW. After just a few miles, you begin looking at the world in a different way. People who have BMWs find themselves making up errands just so they can drive. After a while, they drop the pretense, and just drive anywhere. Spend a few minutes behind the wheel of a BMW and your friends will have to chisel the grin off your face.

Care for a
response
?

Perhaps the entire BMW driving experience can be summed up in a single word – responsive. Our cars and SAVs are designed with the driver in mind. The controls communicate in a way that your body inherently understands, and our vehicles immediately respond to your input.

Advanced technology is another BMW hallmark. For many years, BMW has led the automotive world with new technologies designed to improve safety and the overall driving experience.

Nothing
new
about that.

BMW performance, technology and responsiveness have been core attributes throughout our history. Look back, and you will see that many technological advancements were standard on BMWs years before they were widely adopted by other manufacturers.

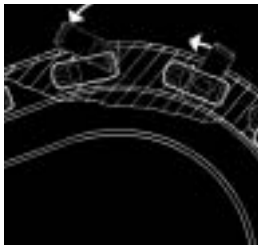
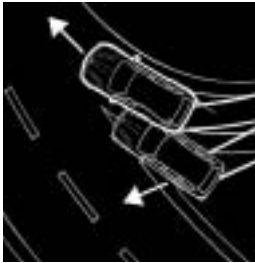
BMW was one of the first manufacturers to offer safety features such as Anti-lock Braking Systems (ABS) and side airbags. BMW was also an innovator with performance features like traction control and variable valve timing. The list of BMW innovations goes on and on, from satellite navigation systems to dynamic stability control to five-speed automatic transmissions.

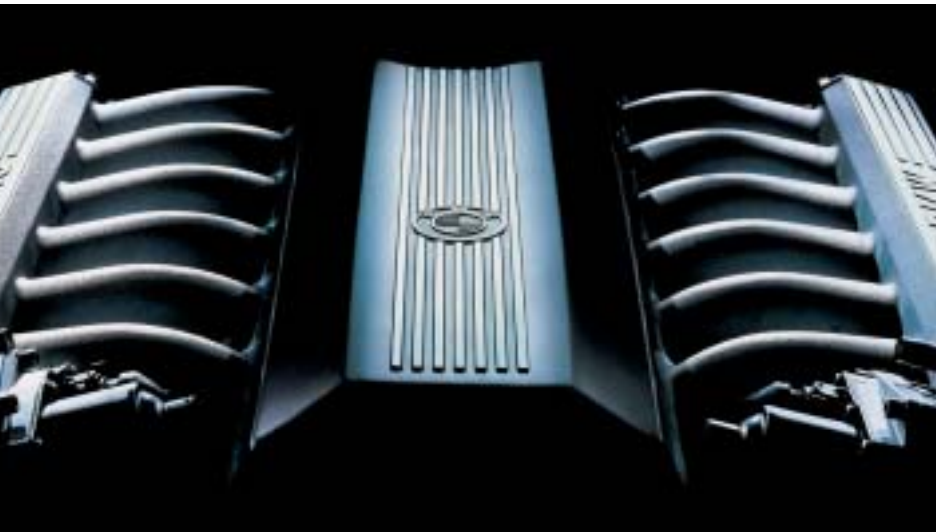
This leadership role means that the recent model cars and SAVs from BMW are still more sophisticated and advanced than many new cars from other manufacturers. In other words, a BMW is a BMW, whether it's three weeks old or three years old. And that's just the first of many reasons why we think buying or leasing a Certified Pre-Owned BMW is an enticing proposition.

One
is sure to fit.

While every BMW model combines "luxury" and "sport" in a way that only BMW can, there are many models and options to think about when looking for your ideal BMW. Indeed, the hardest part of buying or leasing a Certified Pre-Owned BMW may be deciding which model you'd like.

There are Coupes, Convertibles, Sedans and even Wagons and SAVs. In many cases, you can even find an M sport version. Responsive (may we say, renowned) BMW engines are mated to either automatic or manual transmissions. And of course there's a wide range of choices for color and trim. Whether you choose a 3 Series sports sedan, a Z3 roadster or a 7 Series luxury sedan, you'll have a vehicle that is extremely rewarding to own and drive.





A Certified Pre-Owned BMW represents an excellent opportunity to acquire the BMW you've always wanted for a lower investment than you ever thought possible. With value and performance coming together in one exciting package, it's easy to see why we like to say the only thing that goes faster than a BMW is a Certified Pre-Owned BMW.



Catch one before it gets away **again.**

BMW Certified Pre-Owned has you covered.

When you see the Certified Pre-Owned label on a BMW, you immediately know several things about the vehicle in front of you:

- It's a recent BMW model.
- It has been thoroughly inspected by a factory-trained BMW Technician.
- It's covered by the Certified Pre-Owned BMW Protection Plan.
- It's backed by a nationwide network of BMW centers.



A comprehensive

protection plan.

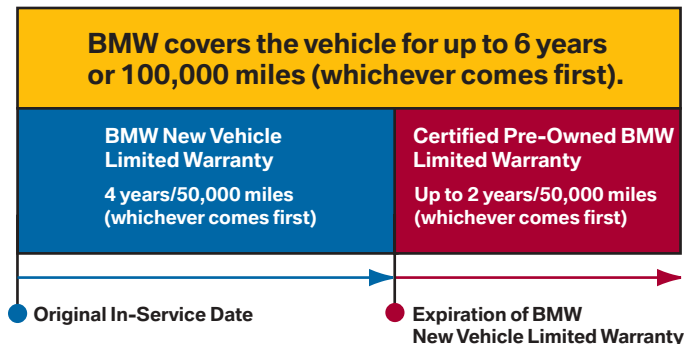
The inspection.

Every car or SAV selected for the Certified Pre-Owned program must go through a rigorous inspection process. Everything from engine performance to the operation of the glovebox light is checked. All scheduled maintenance is brought up to date. If something isn't working properly or up to standard, it's repaired or replaced.

The warranty.

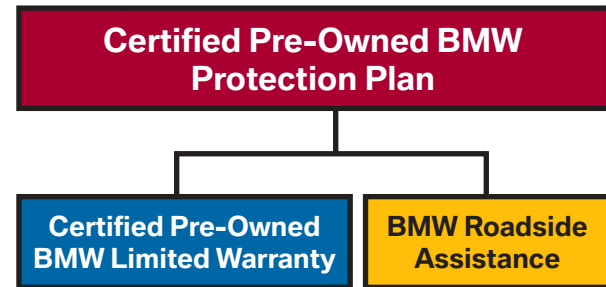
When you acquire a Certified Pre-Owned BMW, your vehicle will be covered by a 2-year/50,000-mile Certified Pre-Owned BMW Limited Warranty. This warranty is over and above BMW's 4-year/50,000-mile New Vehicle Limited Warranty.* That means your Certified Pre-Owned BMW vehicle is covered for up to 6 years/100,000 miles. The CPO limited warranty covers a wide range of vehicle components, including the engine, powertrain, electrical system, suspension, climate control and more.*

The Certified Pre-Owned BMW Limited Warranty is administered by BMW of North America, LLC, which ensures that covered repairs are performed by BMW trained Technicians using only Original BMW Parts. And, since this is a BMW program, you won't have to wait for a third-party adjuster to decide whether your repair is covered; your BMW center can make the determination right on the spot.



BMW Roadside Assistance.

Sometimes things happen when you're out there on the road. That's why every Certified Pre-Owned BMW comes with BMW Roadside Assistance coverage for 2 years or 50,000 miles (whichever comes first).** It doesn't matter where you are in the United States, or what time of day it is, or what day of the year it is – the BMW Roadside Assistance program ensures that you can get help with a single toll-free call.



It's all part of the plan.

The Certified Pre-Owned BMW Protection Plan has been designed to give you peace of mind. We want you to drive away in your Certified Pre-Owned BMW happy and care-free, knowing that your vehicle is in the best possible condition, and that, if you need us out on the road, we're here to help you.

* The Certified Pre-Owned BMW Protection Plan provides coverage for up to 2 years or 50,000 miles (whichever comes first) from the date of expiration of the 4-year/50,000-mile (whichever comes first) BMW New Vehicle Limited Warranty. See your local BMW center for complete details of warranty coverage.

** Starting at the expiration of the BMW New Vehicle Limited Warranty, which includes its own Roadside Assistance plan.



Traditionally, when you finance the purchase of a pre-owned vehicle, you have to go to a bank for a “used-car loan.” The rates can be eye-popping, and the service often does little to soften the blow.

BMW Financial Services NA, LLC (BMW FS) is an integral part of the Certified Pre-Owned BMW Vehicle Program. That means you can finance – or even lease – your pre-owned BMW at attractive rates, just like for a new BMW.

The advantages of working with BMW FS are many. BMW FS can tailor financing or leasing to meet your specific needs. For example, if you plan to keep your BMW for a few years, leasing or balloon financing may be ideal for you. For a longer-term approach, retail financing may be your preferred choice. Whichever route you decide to take, BMW Financial Services and your local BMW center will work with you to create a plan that suits you.

When you join the family, **we treat you like family.**

Your **search** is over.

There is no better way to begin shopping for a Certified Pre-Owned BMW than with a visit to BMW's website (bmwusa.com/certified). The site has a wide range of helpful information about the Certified Pre-Owned BMW Vehicle Program, and you can even use it to find the BMW that meets your specific needs.

The Certified Pre-Owned website has several features to help you find the BMW you're looking for. The Vehicle Locator allows you to enter a model, body style and price range, and it will search a radius of up to 500 miles from your location. When you've found the car you want, you can even get an estimate of monthly purchase or lease payments. If you cannot find a perfect match, you have the option of placing your name on a waiting list, and we will e-mail you if a vehicle becomes available at a local BMW center.

Your Certified Pre-Owned BMW is waiting for you on bmwusa.com/certified. Log on today.



Snapshots from the **family** album.

We recognize that the hardest part of buying or leasing a Certified Pre-Owned BMW is deciding which one you want. We present this photo album of some of our cars and SAVs to help with your decision-making process. Take heart in the fact that whichever model you choose, you'll be driving a BMW, which means you'll have a vehicle with an unmatched blend of performance, technology and style.





3 Series Touring



5 Series Sport Wagon



Z3 roadster



7 Series



3 Series



X5 SAV